

# Annual Statistics 2020

## FEFCO ANNUAL STATISTICS 2020

<b><u>Tables:</u></b>	<b>Page</b>
Key Statistics	2
Total Shipments (Millions of m <sup>2</sup> ) (including Non-Members)	3
Total Shipments ('000 Tonnes) (including Non-Members)	4
Shipments of Member Companies (Millions of m <sup>2</sup> )	5
Shipments of Member Companies ('000 Tonnes)	6
Total Number of Companies (including Non-Members)	7
Total Number of Plants (including Non-Members)	8
Total Number of Corrugators (including Non-Members)	9
Average Weight of Board in g/m <sup>2</sup> (including Non-Members)	10
Die Cut Boxes (as % of total shipments in m <sup>2</sup> ) (including Non-Members & Sheetplants)	11
Total Consumption of Raw Materials ('000 Tonnes) (including Non-Members)	12
Consumption of White or Colored Kraftliner (as % of total consumption of Raw Materials)	13
Consumption of Brown Kraftliner (as % of total consumption of Raw Materials)	14
Consumption of White Top Testliner (as % of total consumption of Raw Materials)	15
Consumption of Testliners (as % of total consumption of Raw Materials)	16
Consumption of Other Liners	17
Consumption of Semi-Chemical Fluting (as % of total consumption of Raw Materials)	18
Consumption of Recycled Fluting (as % of total consumption of Raw Materials)	19
Total Number of Personnel	20
Production per Head ('000 m <sup>2</sup> )	21
Nominal Working Time per Person (Hours per Year)	22
Shipments to CONVERTERS	23
Shipments to TRADERS	24
Classification by End Use	(seperate sheet) 25
Fluting Types in % of total shipments	(seperate sheet) 26
Printing Colours	(seperate sheet) 27
Diagramms	28-32

## FEFCO ANNUAL REPORT 2020 Key Statistics

	2019	2020	% Change
Total Shipments (Millions of m <sup>2</sup> ) (including Non-Members)	49.437	50.914	3,0
Total Shipments ('000 Tonnes) (including Non-Members)	25.290	25.740	1,8
Shipments of Member Companies (Millions of m <sup>2</sup> )	39.169	38.723	-1,1
Shipments of Member Companies ( '000 Tonnes)	19.843	19.387	-2,4
Total Number of Companies (including Non-Members)	367	373	1,6
Total Number of Plants (including Non-Members)	637	646	1,4
Average Weight of Board in g/m <sup>2</sup> (including Non-Members)	512	506	-1,2
Total Consumption of Raw Materials ( '000 Tonnes) (including Non-Members)	21.124	21.495	1,8
Consumption of White or Colored Kraftliner as % of total consumption of Raw Materials	6,8	6,4	-6,2
Consumption of Brown Kraftliner as % of total consumption of Raw Materials	12,8	12,8	0
Consumption of White Top Testliner as % of total consumption of Raw Materials	5,6	6,3	11,1
Consumption of Testliner as % of total consumption of Raw Materials	30,8	31,3	1,6
Consumption of Other Recycled Liner as % of total consumption of Raw Materials	4,5	4,3	-4,7
Consumption of Semi-chemical Fluting as % of total consumption of Raw Materials	4,2	3,6	-16,7
Consumption of Recycled Fluting as % of total consumption of Raw Materials	37,2	37,3	0,3
Total Personnel	92.810	95.541	2,9
Shipments to CONVERTERS (in %)	24,0	23,5	-3,5
Shipments to TRADERS (in %)	10,0	11,7	18,7

**Total Shipments in Millions of m<sup>2</sup>**  
(including Non-Members)

	2019	2020	% Change 2019/2020	Members Only
<b>Austria</b>	1.028	1.044	1,56	Y / Y
<b>Benelux</b>	2.107	2.058	-2,33	N / N
<b>Croatia</b>	n.a.	n.a.	n.a.	n.a. / n.a.
<b>Czech Republic</b>	1.114	1.192	7,00	N / N
<b>France</b>	5.514	5.349	-2,99	N / N
<b>Germany</b>	10.842	11.270	3,95	N / N
<b>Hungary</b>	573	574	0,17	N / N
<b>Italy</b>	7.136	7.354	3,05	N / N
<b>Norway</b>	219	228	4,11	Y / Y
<b>Poland</b>	4.480	4.722	5,40	N / N
<b>Romania</b>	799	807	1,00	Y / Y
<b>Spain</b>	5.520	5.552	0,58	N / N
<b>Sweden</b>	661	660	-0,15	Y / Y
<b>Turkey</b>	4.304	4.815	11,87	N / N
<b>United Kingdom</b>	5.140	5.289	2,90	N / N
<b>TOTAL EUROPE</b>	<b>49.437</b>	<b>50.914</b>	<b>3,00</b>	

B3

## Total Shipments in 000's Tonnes (including Non-Members)

	2019	2020	% Change 2019/2020
<b>Austria</b>	479	489	2,09
<b>Benelux</b>	1.117	1.074	-3,85
<b>Croatia</b>	134	137	2,24
<b>Czech Republic</b>	535	568	6,17
<b>France</b>	2.749	2.633	-4,22
<b>Germany</b>	5.545	5.726	3,26
<b>Hungary</b>	283	284	0,35
<b>Italy</b>	3.933	4.000	1,70
<b>Norway</b>	99	104	5,05
<b>Poland</b>	2.173	2.269	4,42
<b>Romania</b>	390	395	1,28
<b>Spain</b>	2.914	2.871	-1,48
<b>Sweden</b>	314	320	1,91
<b>Turkey</b>	2.281	2.490	9,16
<b>United Kingdom</b>	2.344	2.380	1,54
<b>TOTAL EUROPE</b>	<b>25.290</b>	<b>25.740</b>	<b>1,80</b>

B4

## Shipments of Member Companies in Millions of m<sup>2</sup>

	2019	2020	% Change 2019/2020
<b>Austria</b>	1.028	1.044	1,56
<b>Benelux</b>	2.002	1.955	-2,35
<b>Croatia</b>	299	295	-1,34
<b>Czech Republic</b>	751	809	7,72
<b>France</b>	3.926	3.755	-4,36
<b>Germany</b>	7.912	8.103	2,41
<b>Hungary</b>	533	534	0,19
<b>Italy</b>	5.809	4.561	-21,48
<b>Norway</b>	219	228	4,11
<b>Poland</b>	3.792	4.015	5,88
<b>Romania</b>	799	807	1,00
<b>Spain</b>	4.207	4.231	0,57
<b>Sweden</b>	661	660	-0,15
<b>Turkey</b>	3.061	3.467	13,26
<b>United Kingdom</b>	4.170	4.259	2,13
<b>Membership Total</b>	<b>39.169</b>	<b>38.723</b>	<b>-1,10</b>

B5

## Shipments of Member Companies in 000's Tonnes

	Membership 2019		Membership 2020	
	Tonnes	% of total shipments	Tonnes	% of total shipments
<b>Austria</b>	479	100,00	489	100,00
<b>Benelux</b>	1.061	94,99	1.020	94,97
<b>Croatia</b>	132	98,51	132	96,35
<b>Czech Republic</b>	353	65,98	384	67,61
<b>France</b>	1.965	71,48	1.848	70,19
<b>Germany</b>	4.020	72,50	4.076	71,18
<b>Hungary</b>	263	92,93	264	92,96
<b>Italy</b>	3.230	82,13	2.536	63,40
<b>Norway</b>	99	100,00	104	100,00
<b>Poland</b>	1.830	84,22	1.921	84,66
<b>Romania</b>	390	100,00	395	100,00
<b>Spain</b>	2.220	76,18	2.188	76,21
<b>Sweden</b>	314	100,00	320	100,00
<b>Turkey</b>	1.585	69,49	1.793	72,01
<b>United Kingdom</b>	1.902	81,14	1.917	80,55
<b>Membership Total</b>	<b>19.843</b>	<b>78,50</b>	<b>19.387</b>	<b>75,30</b>

B6

## Total Number of Corrugating Companies (including Non-Members)

	2019	2020
<b>Austria</b>	6	6
<b>Benelux</b>	n.a.	n.a.
<b>Croatia</b>	n.a.	5
<b>Czech Republic</b>	7	7
<b>France</b>	13	10
<b>Germany</b>	42	42
<b>Hungary</b>	8	8
<b>Italy</b>	44	44
<b>Norway</b>	3	3
<b>Poland</b>	42	45
<b>Romania</b>	11	11
<b>Spain</b>	71	71
<b>Sweden</b>	4	4
<b>Turkey</b>	89	95
<b>United Kingdom</b>	27	27
<b>TOTAL EUROPE</b>	<b>367</b>	<b>378</b>

B7



## Total Number of Corrugating Plants (including Non-Members)

	2019	2020
<b>Austria</b>	9	9
<b>Benelux</b>	n.a.	n.a.
<b>Croatia</b>	n.a.	5
<b>Czech Republic</b>	9	9
<b>France</b>	62	62
<b>Germany</b>	125	125
<b>Hungary</b>	10	10
<b>Italy</b>	69	69
<b>Norway</b>	3	3
<b>Poland</b>	57	60
<b>Romania</b>	12	13
<b>Spain</b>	89	89
<b>Sweden</b>	10	10
<b>Turkey</b>	114	119
<b>United Kingdom</b>	68	68
<b>TOTAL EUROPE</b>	<b>637</b>	<b>651</b>

B8

### Total Number of Corrugators (including Non-Members)

	2020			Result
	<2m	>2 <2,5m	> 2,5m	
<b>Austria</b>	2	6	2	10
<b>Benelux</b>	1	14	6	21
<b>Croatia</b>	n.a.	n.a.	n.a.	n.a.
<b>Czech Republic</b>	1	7	2	10
<b>France</b>	n.a.	n.a.	n.a.	n.a.
<b>Germany</b>	5	69	29	103
<b>Hungary</b>	3	7	1	11
<b>Italy</b>	7	71	21	99
<b>Norway</b>	n.a.	2	1	3
<b>Poland</b>	n.a.	n.a.	n.a.	n.a.
<b>Romania</b>	1	12	n.a.	13
<b>Spain</b>	10	74	11	95
<b>Sweden</b>	n.a.	10	n.a.	10
<b>Turkey</b>	n.a.	n.a.	n.a.	n.a.
<b>United Kingdom</b>	24	43	10	77
<b>TOTAL EUROPE</b>	<b>54</b>	<b>315</b>	<b>83</b>	<b>452</b>

B9

**Average Weight of Board in g/m<sup>2</sup>**  
(including Non-Members)

	<b>2019</b>	<b>2020</b>
<b>Austria</b>	466	468
<b>Benelux</b>	530	522
<b>Croatia</b>	n.a.	n.a.
<b>Czech Republic</b>	480	477
<b>France</b>	499	492
<b>Germany</b>	511	508
<b>Hungary</b>	494	495
<b>Italy</b>	551	544
<b>Norway</b>	452	456
<b>Poland</b>	485	481
<b>Romania</b>	488	489
<b>Spain</b>	528	517
<b>Sweden</b>	475	485
<b>Turkey</b>	530	517
<b>United Kingdom</b>	456	450
<b>TOTAL EUROPE as weighted average</b>	<b>512</b>	<b>506</b>

B10

## Die Cut Boxes

(as % of total shipments in m<sup>2</sup>, including Non-Members & Sheet Plants)

	2019	2020
<b>Austria</b>	53,2	55,0
<b>Benelux</b>	33,4	31,9
<b>Croatia</b>	n.a.	n.a.
<b>Czech Republic</b>	32,3	31,4
<b>France</b>	n.a.	n.a.
<b>Germany</b>	49,6	50,1
<b>Hungary</b>	58,5	57,6
<b>Italy</b>	n.a.	n.a.
<b>Norway</b>	60,5	62,8
<b>Poland</b>	40,8	42,4
<b>Romania</b>	33,0	36,8
<b>Spain</b>	n.a.	n.a.
<b>Sweden</b>	60,0	51,0
<b>Turkey</b>	n.a.	n.a.
<b>United Kingdom</b>	43,2	49,9
<b>TOTAL EUROPE as weighted average</b>	<b>45,1</b>	<b>46,7</b>

B11

## Total Consumption of Raw Materials in 000's Tonnes (including Non-Members)

	2019	2020	% Change 2019/2020
<b>Austria</b>	554	558	0,72
<b>Benelux</b>	1.137	1.114	-2,02
<b>Croatia</b>	n.a.	n.a.	n.a.
<b>Czech Republic</b>	400	438	9,50
<b>France</b>	n.a.	n.a.	n.a.
<b>Germany*</b>	5.838	6.033	3,34
<b>Hungary</b>	301	307	1,99
<b>Italy</b>	4.083	4.120	0,91
<b>Norway</b>	108	107	-0,93
<b>Poland</b>	2.260	2.360	4,42
<b>Romania</b>	413	436	5,57
<b>Spain</b>	3.232	3.184	-1,49
<b>Sweden</b>	317	340	7,26
<b>Turkey</b>	n.a.	n.a.	n.a.
<b>United Kingdom</b>	2.481	2.498	0,69
<b>TOTAL EUROPE</b>	<b>21.124</b>	<b>21.495</b>	<b>1,80</b>

\*includes members only

B12

## Consumption of White or Colored Kraftliner

(CCB Classification 02-04-06-08-91-98 ; as % of the total consumption of Raw Materials)

	2019	2020
<b>Austria</b>	7,4	5,8
<b>Benelux</b>	5,9	5,4
<b>Croatia</b>	n.a.	23,2
<b>Czech Republic</b>	4,7	3,7
<b>France</b>	n.a.	n.a.
<b>Germany</b>	n.a.	n.a.
<b>Hungary</b>	2,7	3,0
<b>Italy</b>	8,5	7,9
<b>Norway</b>	21,0	24,8
<b>Poland</b>	2,0	2,2
<b>Romania</b>	2,0	1,8
<b>Spain</b>	6,6	5,4
<b>Sweden</b>	3,0	8,0
<b>Turkey</b>	1,6	2,2
<b>United Kingdom</b>	10,7	10,5
<b>TOTAL EUROPE as weighted average</b>	<b>6,8</b>	<b>6,4</b>

B13

## Brown Kraftliner

CCB Classification 00-09-90-92-97 ; as % of the total consumption of Raw Materials)

	2019	2020
Austria	13,1	14,0
Benelux	14,2	14,9
Croatia	n.a.	40,0
Czech Republic	10,3	11,5
France	n.a.	n.a.
Germany	n.a.	n.a.
Hungary	13,9	12,5
Italy	16,3	15,8
Norway	12,1	8,9
Poland	8,8	9,0
Romania	12,0	14,0
Spain	13,4	14,1
Sweden	31,0	28,0
Turkey	14,9	14,8
United Kingdom	7,3	6,8
<b>TOTAL EUROPE as weighted average</b>	<b>12,8</b>	<b>12,8</b>

B14

## WHITE TOP TESTLINER

CCB Classification 70-71-72 ; as % of the total consumption of Raw Materials)

	2019	2020
<b>Austria</b>	6,7	8,8
<b>Benelux</b>	3,6	5,5
<b>Croatia</b>	n.a.	19,4
<b>Czech Republic</b>	7,9	7,5
<b>France</b>	n.a.	n.a.
<b>Germany</b>	n.a.	n.a.
<b>Hungary</b>	4,8	4,9
<b>Italy</b>	1,6	1,5
<b>Norway</b>	11,5	0,6
<b>Poland</b>	12,3	14,2
<b>Romania</b>	7,0	7,5
<b>Spain</b>	6,0	6,4
<b>Sweden</b>	n.a.	n.a.
<b>Turkey</b>	5,4	5,6
<b>United Kingdom</b>	n.a.	n.a.
<b>TOTAL EUROPE as weighted average</b>	<b>5,6</b>	<b>6,3</b>

B15



**Consumption of Testliners**  
(CCB Classification 10-11-12-20-21-22-30-32-38-50-55 ;  
as % of the total consumption of Raw Materials)

	<b>2019</b>	<b>2020</b>
<b>Austria</b>	29,9	28,3
<b>Benelux</b>	41,2	46,6
<b>Croatia</b>	n.a.	14,1
<b>Czech Republic</b>	33,9	35,2
<b>France</b>	n.a.	n.a.
<b>Germany</b>	n.a.	n.a.
<b>Hungary</b>	34,8	34,1
<b>Italy</b>	22,2	22,3
<b>Norway</b>	19,2	29,4
<b>Poland</b>	37,1	33,1
<b>Romania</b>	30,0	29,0
<b>Spain</b>	27,4	29,6
<b>Sweden</b>	30,0	31,0
<b>Turkey</b>	21,5	21,9
<b>United Kingdom</b>	38,6	39,9
<b>TOTAL EUROPE as weighted average</b>	<b>30,8</b>	<b>31,3</b>

B16

## Consumption of Other Liners

(CCB Classification 53-74 ; as % of the total consumption of Raw Materials)

	2019	2020
<b>Austria</b>	2,4	2,4
<b>Benelux</b>	5,6	4,6
<b>Croatia</b>	n.a.	n.a.
<b>Czech Republic</b>	2,3	2,0
<b>France</b>	n.a.	n.a.
<b>Germany</b>	n.a.	n.a.
<b>Hungary</b>	5,7	4,8
<b>Italy</b>	4,6	4,4
<b>Norway</b>	n.a.	n.a.
<b>Poland</b>	1,9	2,1
<b>Romania</b>	8,0	7,5
<b>Spain</b>	5,8	5,8
<b>Sweden</b>	n.a.	n.a.
<b>Turkey</b>	10,2	6,5
<b>United Kingdom</b>	n.a.	n.a.
<b>TOTAL EUROPE as weighted average</b>	<b>4,5</b>	<b>4,3</b>

B17

**Consumption of Semi-Chemical Fluting**  
(CCB Classifications 40-46-47 ; as % of the total consumption of Raw Materials)

	<b>2019</b>	<b>2020</b>
<b>Austria</b>	7,9	9,8
<b>Benelux</b>	0,9	0,8
<b>Croatia</b>	n.a.	3,3
<b>Czech Republic</b>	0,1	0,1
<b>France</b>	n.a.	n.a.
<b>Germany</b>	n.a.	n.a.
<b>Hungary</b>	2,6	3,4
<b>Italy</b>	8,0	6,4
<b>Norway</b>	15,7	18,8
<b>Poland</b>	0,7	0,6
<b>Romania</b>	6,0	5,6
<b>Spain</b>	4,3	4,1
<b>Sweden</b>	10,0	5,0
<b>Turkey</b>	3,6	6,5
<b>United Kingdom</b>	0,9	0,6
<b>TOTAL EUROPE as weighted average</b>	<b>4,2</b>	<b>3,6</b>

B18

## Consumption of Other Fluting (Recycled paper basis)

(CCB Classifications 41-43-44-45-60-61 ; as % of the total consumption of Raw Materials)

	2019	2020
<b>Austria</b>	32,6	30,9
<b>Benelux</b>	28,6	22,2
<b>Croatia</b>	n.a.	n.a.
<b>Czech Republic</b>	40,8	40,0
<b>France</b>	n.a.	n.a.
<b>Germany</b>	n.a.	n.a.
<b>Hungary</b>	35,5	37,3
<b>Italy</b>	38,8	41,7
<b>Norway</b>	20,5	17,5
<b>Poland</b>	37,2	38,8
<b>Romania</b>	35,0	34,6
<b>Spain</b>	36,5	34,7
<b>Sweden</b>	26,0	28,0
<b>Turkey</b>	42,8	42,5
<b>United Kingdom</b>	42,5	42,2
<b>TOTAL EUROPE as weighted average</b>	<b>37,2</b>	<b>37,3</b>

B19

## Total Number of Personnel

	2019		2020	
	Production Employees	Total Employees	Production Employees	Total Employees
<b>Austria</b>	1.366	1.901	1.390	1.882
<b>Benelux</b>	2.634	3.695	2.783	3.733
<b>Croatia</b>	n.a.	n.a.	162	188
<b>Czech Republic</b>	1.656	2.160	1.647	2.158
<b>France</b>	n.a.	n.a.	n.a.	n.a.
<b>Germany</b>	15.098	20.768	14.891	20.589
<b>Hungary</b>	1.339	1.998	1.324	1.991
<b>Italy</b>	6.420	14.460	6.620	14.910
<b>Norway</b>	386	569	391	593
<b>Poland</b>	5.617	8.026	5.828	8.286
<b>Romania</b>	1.750	2.375	2.314	3.461
<b>Spain</b>	8.480	11.266	8.414	11.185
<b>Sweden</b>	1.063	1.489	1.033	1.474
<b>Turkey</b>	5.711	7.614	6.487	8.509
<b>United Kingdom</b>	10.993	16.489	11.180	16.770
<b>TOTAL EUROPE</b>	<b>62.513</b>	<b>92.810</b>	<b>64.464</b>	<b>95.729</b>

B20

### Production per Head in 1000 m<sup>2</sup>

	2019	2020
<b>Austria</b>	753	751
<b>Benelux</b>	800	739
<b>Croatia</b>	n.a.	n.a.
<b>Czech Republic</b>	673	724
<b>France</b>	n.a.	n.a.
<b>Germany</b>	718	757
<b>Hungary</b>	428	434
<b>Italy</b>	1.112	1.111
<b>Norway</b>	567	583
<b>Poland</b>	798	810
<b>Romania</b>	457	349
<b>Spain</b>	651	660
<b>Sweden</b>	622	639
<b>Turkey</b>	754	742
<b>United Kingdom</b>	468	473
<b>TOTAL EUROPE</b>	<b>791</b>	<b>790</b>

B21

## Nominal Working Time and Productivity per Head

	Working Time [hours / year]		Productivity [m <sup>2</sup> /Person hour]	
	2019	2020	2019	2020
<b>Austria</b>	1.705	1.707	441	440
<b>Benelux</b>	1.819	1.747	440	423
<b>Croatia</b>	n.a.	2.000	n.a.	n.a.
<b>Czech Republic</b>	1.882	1.882	357	385
<b>France</b>	n.a.	n.a.	n.a.	n.a.
<b>Germany</b>	1.743	1.771	412	427
<b>Hungary</b>	1.848	1.848	232	235
<b>Italy</b>	2.024	2.040	549	545
<b>Norway</b>	1.725	1.713	329	340
<b>Poland</b>	2.008	2.024	397	400
<b>Romania</b>	1.832	1.866	249	187
<b>Spain</b>	1.768	1.768	368	373
<b>Sweden</b>	1.472	1.498	422	427
<b>Turkey</b>	1.984	2.008	380	370
<b>United Kingdom</b>	1.710	1.710	273	277
<b>TOTAL EUROPE</b>	<b>1.809</b>	<b>1.827</b>	<b>373</b>	<b>371</b>

B22

**Shipments to CONVERTERS**  
(in % of total shipments of m<sup>2</sup>)

	2019	2020	% Change 2019/2020
<b>Austria</b>	10,0	11,7	17,00
<b>Benelux</b>	39,4	35,6	-9,77
<b>Croatia</b>	n.a.	n.a.	n.a.
<b>Czech Republic</b>	38,0	36,0	-5,26
<b>France</b>	n.a.	n.a.	n.a.
<b>Germany</b>	6,0	6,0	0
<b>Hungary</b>	95,0	93,0	-2,11
<b>Italy</b>	38,0	38,0	0
<b>Norway</b>	5,0	5,0	0
<b>Poland</b>	30,0	29,0	-3,33
<b>Romania</b>	34,0	30,0	-11,76
<b>Spain</b>	15,4	15,0	-2,47
<b>Sweden</b>	n.a.	n.a.	n.a.
<b>Turkey</b>	n.a.	n.a.	n.a.
<b>United Kingdom</b>	31,1	31,8	2,25
<b>TOTAL EUROPE</b>	<b>24,0</b>	<b>23,5</b>	

B23



**Shipments to TRADERS**  
(in % of total shipments of m<sup>2</sup>)

	2019	2020	% Change 2019/2020
<b>Austria</b>	8,0	7,2	-10,00
<b>Benelux</b>	3,7	6,3	71,82
<b>Croatia</b>	n.a.	n.a.	n.a.
<b>Czech Republic</b>	n.a.	n.a.	n.a.
<b>France</b>	n.a.	n.a.	n.a.
<b>Germany</b>	8,9	9,0	1,12
<b>Hungary</b>	5,0	6,6	32,00
<b>Italy</b>	n.a.	n.a.	n.a.
<b>Norway</b>	42,0	41,5	-1,19
<b>Poland</b>	15,0	21,0	40,00
<b>Romania</b>	n.a.	10,0	n.a.
<b>Spain</b>	n.a.	n.a.	n.a.
<b>Sweden</b>	n.a.	n.a.	n.a.
<b>Turkey</b>	n.a.	n.a.	n.a.
<b>United Kingdom</b>	n.a.	n.a.	n.a.
<b>TOTAL EUROPE</b>	<b>10,0</b>	<b>11,7</b>	

## Classification of shipment by end-use sector, as a percentage of turnover 2020

	Austria	Benelux	Croatia	Czech Republic	France	Germany	Hungary	Italy	Norway	Poland	Romania	Spain	Sweden	Turkey	United Kingdom	Weighted Average
<b>1</b>	13,4	20,9	0,0	0,9	0,0	3,4	2,8	10,9	13,8	13,4	5,8	25,1	0,0	7,0	0,0	<b>8,2</b>
<b>2</b>	2,6	2,4	0,0	0,6	0,0	1,6	2,6	3,8	17,6	4,7	3,8	8,9	0,0	10,3	0,0	<b>2,8</b>
<b>3</b>	6,1	5,7	0,0	11,7	0,0	5,6	5,1	11,6	10,1	6,8	4,6	5,3	0,0	3,8	0,0	<b>4,2</b>
<b>4</b>	15,3	20,8	0,0	14,2	0,0	28,5	11,0	27,1	12,7	12,9	7,6	21,2	0,0	26,2	0,0	<b>16,8</b>
<b>5</b>	10,3	6,4	0,0	6,3	0,0	6,1	3,1	11,1	5,1	5,1	7,2	9,0	0,0	5,1	0,0	<b>4,9</b>
<b>6</b>	10,8	10,8	0,0	17,2	0,0	5,7	25,8	9,1	7,6	11,6	17,9	5,3	0,0	10,7	0,0	<b>5,8</b>
<b>7</b>	8,3	2,4	0,0	10,8	0,0	16,3	6,1	3,0	6,4	10,4	25,4	1,7	0,0	12,7	0,0	<b>7,7</b>
<b>8</b>	0,5	0,2	0,0	7,0	0,0	3,2	14,8	2,1	1,0	5,0	0,7	0,7	0,0	1,4	0,0	<b>2,0</b>
<b>9</b>	5,5	3,7	0,0	3,9	0,0	3,5	3,7	1,2	0,0	0,8	2,8	2,5	0,0	2,1	0,0	<b>2,3</b>
<b>10</b>	5,1	4,0	0,0	1,9	0,0	5,9	4,0	3,0	0,0	2,1	1,8	4,7	0,0	3,0	0,0	<b>3,5</b>
<b>11</b>	1,1	3,0	0,0	0,8	0,0	4,5	0,4	1,9	5,7	0,2	0,2	2,1	0,0	2,9	0,0	<b>2,3</b>
<b>12</b>	3,4	2,1	0,0	8,9	0,0	6,5	0,0	7,2	0,0	9,5	0,8	2,3	0,0	0,1	0,0	<b>3,4</b>
<b>13</b>	10,0	5,8	0,0	7,0	0,0	4,0	11,3	6,4	1,5	6,9	6,2	3,4	0,0	2,4	0,0	<b>3,3</b>
<b>14</b>	7,6	11,8	0,0	8,8	0,0	5,1	9,3	1,6	18,5	10,6	15,2	7,8	0,0	12,3	0,0	<b>5,5</b>
<b>Total</b>	<b>100,0</b>	<b>100,0</b>	<b>n.a.</b>	<b>100,0</b>	<b>n.a.</b>	<b>99,9</b>	<b>100,0</b>	<b>100,0</b>	<b>100,0</b>	<b>100,0</b>	<b>100,0</b>	<b>100,0</b>	<b>n.a.</b>	<b>100,0</b>	<b>n.a.</b>	

### Categories for classification:

- |                      |                             |
|----------------------|-----------------------------|
| 1 Produce            | 8 IT, Communication & Audio |
| 2 Fresh meat & fish  | 9 Capital goods             |
| 3 Dairy products     | 10 Auxiliary goods          |
| 4 Processed food     | 11 Logistics                |
| 5 Beverages          | 12 Packaging for ecommerce  |
| 6 FMCG               | 13 Other paper products     |
| 7 Long lasting goods | 14 Other excluding sheets   |

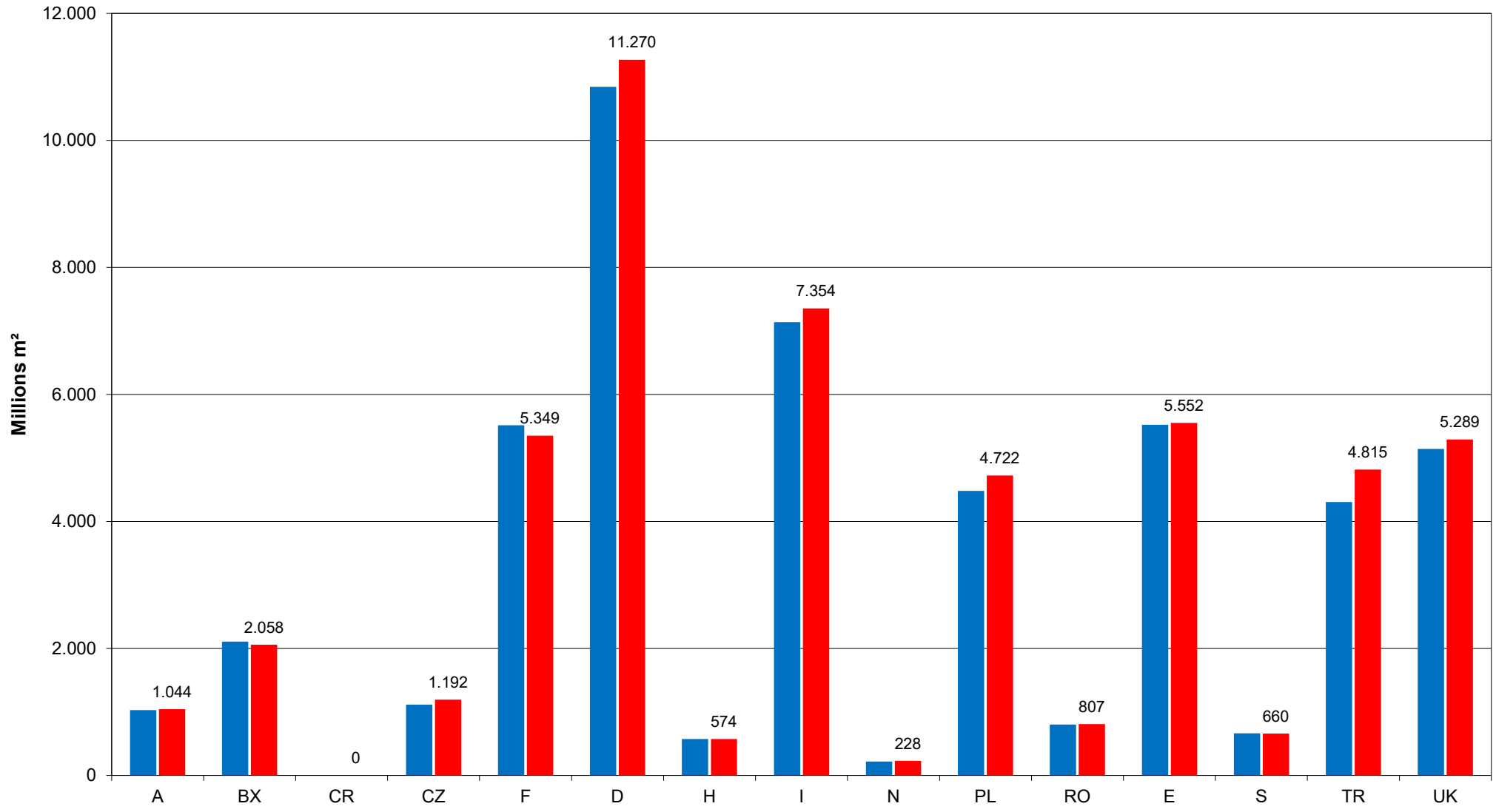
## Fluting Types in % of Total Shipments 2020

	<b>B-flute</b>	<b>C-flute</b>	<b>BC-flute</b>	<b>E-flute</b>	<b>Micro-FI</b>	<b>Others</b>
<b>Austria</b>	36,8	15,7	10,8	20,4	1,1	15,2
<b>Benelux</b>	47,4	12,4	10,2	7,1	0,9	22,0
<b>Croatia</b>	61,3	18,2	8,3	8,3	3,9	0,0
<b>Czech Republic</b>	48,9	8,3	12,9	16,9	0,0	13,0
<b>France</b>	<b>n.a.</b>	<b>n.a.</b>	<b>n.a.</b>	<b>n.a.</b>	<b>n.a.</b>	<b>n.a.</b>
<b>Germany</b>	35,9	11,4	15,6	14,7	3,8	18,6
<b>Hungary</b>	37,7	15,3	17,1	16,2	0,7	13,0
<b>Italy</b>	<b>n.a.</b>	<b>n.a.</b>	<b>n.a.</b>	<b>n.a.</b>	<b>n.a.</b>	<b>n.a.</b>
<b>Norway</b>	49,5	26,6	6,5	14,9	0,6	2,0
<b>Poland</b>	43,9	14,9	11,0	14,9	0,4	14,9
<b>Romania</b>	35,8	20,5	18,7	15,0	0,0	10,0
<b>Spain</b>	<b>n.a.</b>	<b>n.a.</b>	<b>n.a.</b>	<b>n.a.</b>	<b>n.a.</b>	<b>n.a.</b>
<b>Sweden</b>	37,0	42,0	0,0	0,0	0,0	21,0
<b>Turkey</b>	22,9	20,8	40,6	10,1	0,0	5,6
<b>United Kingdom</b>	<b>n.a.</b>	<b>n.a.</b>	<b>n.a.</b>	<b>n.a.</b>	<b>n.a.</b>	<b>n.a.</b>
<b>Total Europe as weighted average</b>	28,1	12,0	13,2	9,4	0,5	8,9

Countries	% of the Products by Number of Printing Colours										% Changes				
	2019					2020					2019 / 2020				
	0	1	2	3	> 3	0	1	2	3	> 3	0	1	2	3	> 3
Austria	35,4	34,2	11,0	8,4	11,0	35,6	33,7	11,9	8,1	10,7	0,6	-1,5	8,2	-3,6	-2,7
Benelux	34,7	39,3	14,6	5,6	5,8	34,2	39,4	14,7	6,0	5,7	-1,4	0,3	0,7	7,1	-1,7
Croatia	0,0	0,0	0,0	0,0	0,0	61,3	18,2	8,3	8,3	3,9	n.a.	n.a.	n.a.	n.a.	n.a.
Czech Republic	28,1	41,2	15,3	6,9	8,5	33,1	35,9	12,5	11,6	6,9	17,8	-12,9	-18,3	68,1	-18,8
France	n.a.	n.a.	n.a.	n.a.	n.a.	n.a.	n.a.	n.a.	n.a.	n.a.	n.a.	n.a.	n.a.	n.a.	n.a.
Germany	27,5	33,3	14,7	9,7	14,8	26,6	34,0	14,8	10,3	14,3	-3,3	2,1	0,7	6,2	-3,4
Hungary	36,7	32,4	11,5	7,9	11,5	39,0	33,0	10,3	6,8	10,9	6,3	1,9	-10,4	-13,9	-5,2
Italy	n.a.	n.a.	n.a.	n.a.	n.a.	n.a.	n.a.	n.a.	n.a.	n.a.	n.a.	n.a.	n.a.	n.a.	n.a.
Norway	33,4	30,6	17,6	11,0	7,4	36,6	30,7	16,1	10,4	6,2	9,6	0,3	-8,5	-5,5	-16,2
Poland	47,5	19,6	10,8	12,4	9,7	46,5	20,1	11,4	12,4	9,6	-2,1	2,6	5,6	0,0	-1,0
Romania	36,0	33,0	14,0	10,0	7,0	35,0	39,0	13,0	7,0	6,0	-2,8	18,2	-7,1	-30,0	-14,3
Spain	n.a.	n.a.	n.a.	n.a.	n.a.	n.a.	n.a.	n.a.	n.a.	n.a.	n.a.	n.a.	n.a.	n.a.	n.a.
Sweden	n.a.	n.a.	n.a.	n.a.	n.a.	n.a.	n.a.	n.a.	n.a.	n.a.	n.a.	n.a.	n.a.	n.a.	n.a.
Turkey	n.a.	n.a.	n.a.	n.a.	n.a.	n.a.	n.a.	n.a.	n.a.	n.a.	n.a.	n.a.	n.a.	n.a.	n.a.
United Kingdom	n.a.	n.a.	n.a.	n.a.	n.a.	n.a.	n.a.	n.a.	n.a.	n.a.	n.a.	n.a.	n.a.	n.a.	n.a.

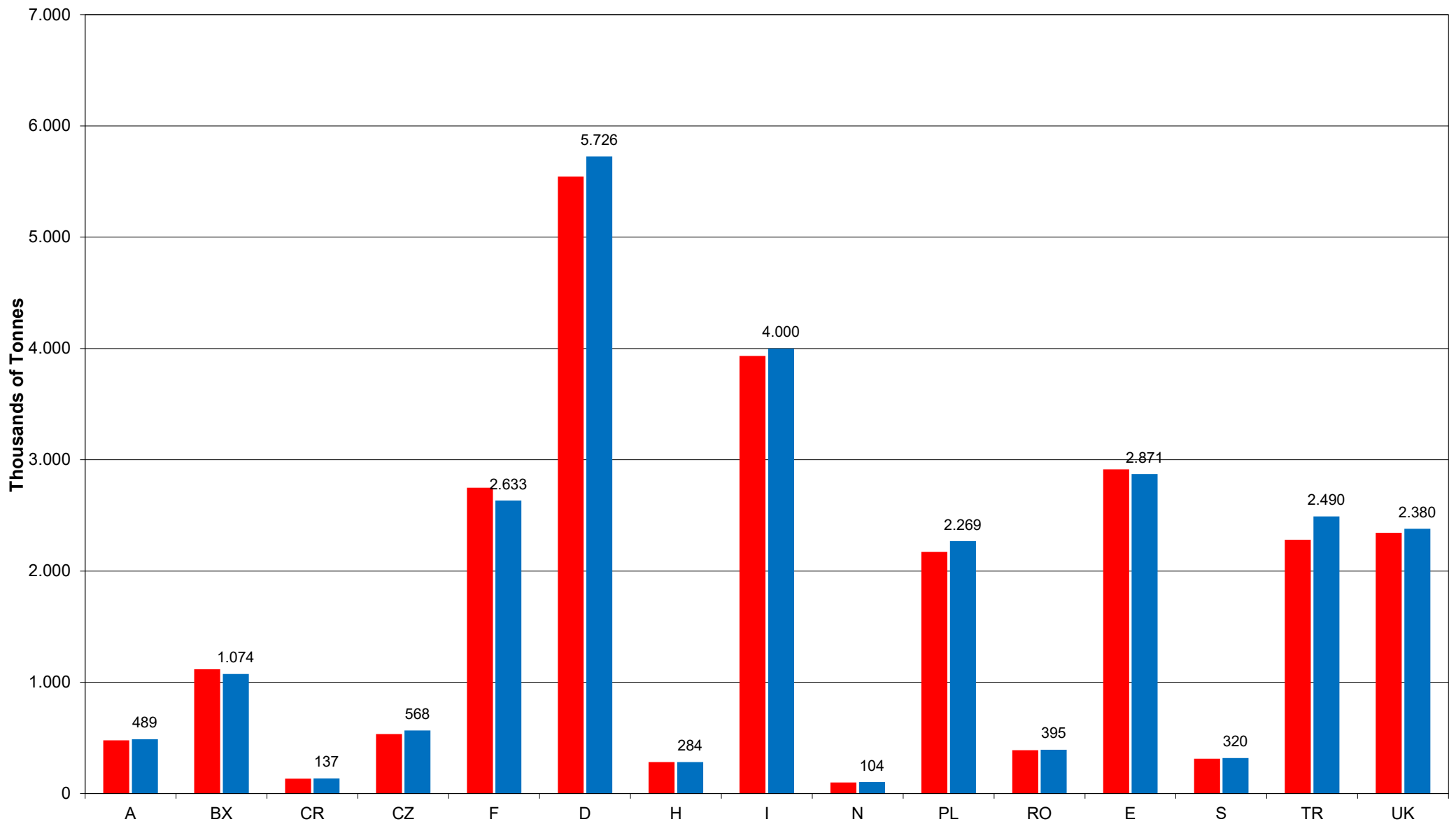
# Shipments in Millions m<sup>2</sup>

2019 2020



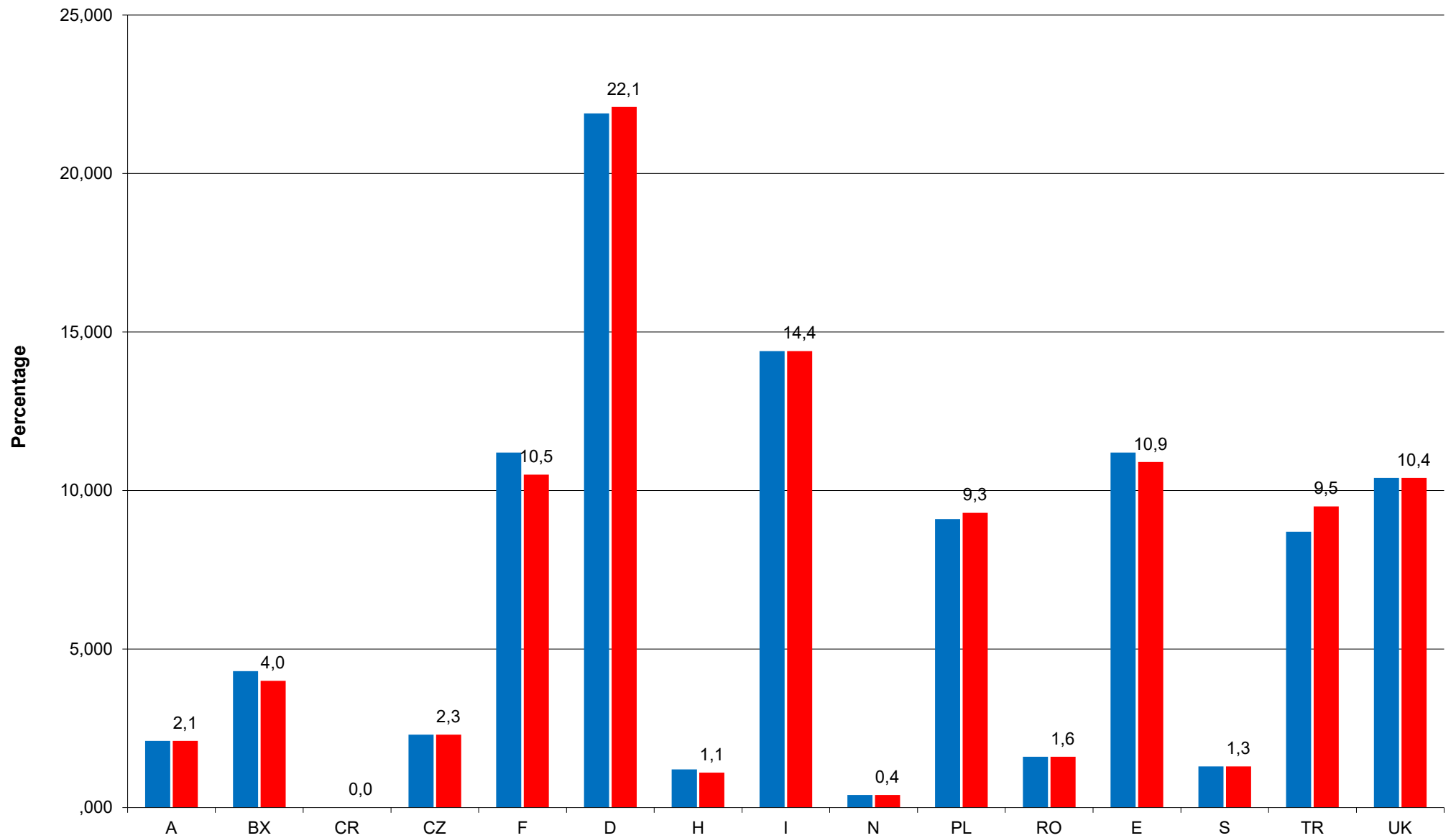
# Shipments in '000 Tonnes

■ 2019 ■ 2020

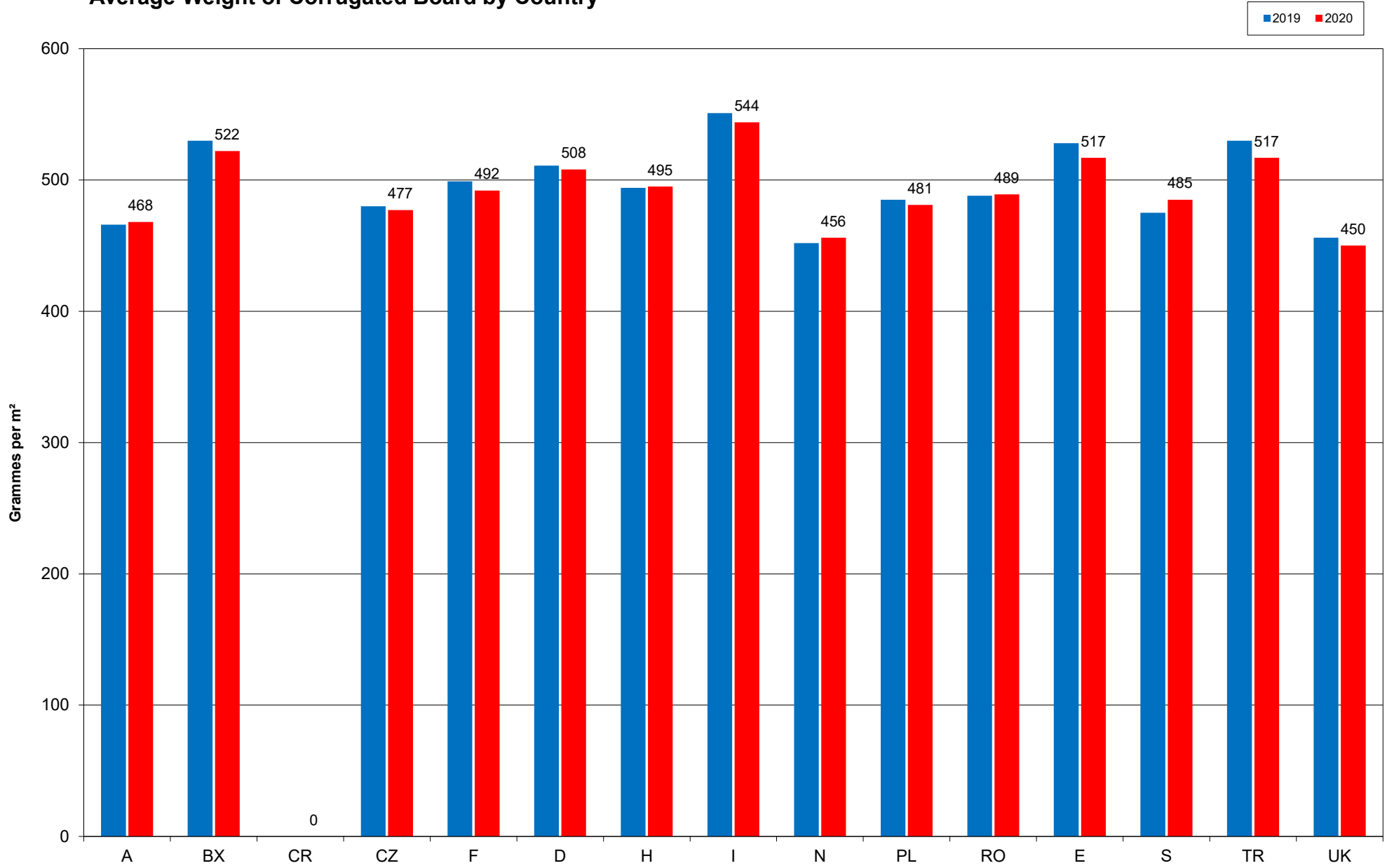


# Relative Share of Total Shipments by Country (based on m<sup>2</sup>)

2019 2020



# Average Weight of Corrugated Board by Country





# Fluting Type

