

Annual Statistics  
**2016**

## FEFCO ANNUAL STATISTICS 2016

<b>Tables:</b>	Page
Key Statistics	2
Total Shipments (Millions of m <sup>2</sup> ) (including Non-Members)	3
Total Shipments ('000 Tonnes) (including Non-Members)	4
Shipments of Member Companies (Millions of m <sup>2</sup> )	5
Shipments of Member Companies ('000 Tonnes)	6
Total Number of Companies (including Non-Members)	7
Total Number of Plants (including Non-Members)	8
Total Number of Corrugators (including Non-Members)	9
Average Weight of Board in g/m <sup>2</sup> (including Non-Members)	10
Die Cut Boxes (as % of Total Shipments in m <sup>2</sup> ) (including Non-Members & Sheetplants)	11
Shipments in Sheets (as % of Total Shipments in m <sup>2</sup> ) (including Non-Members)	12
Total Consumption of Raw Materials ('000 Tonnes) (including Non-Members)	13
Consumption of Kraftliner as % of Total Consumption of Raw Materials	14
Consumption of Brown Kraftliner as % of Total Consumption of Raw Materials	15
Consumption of Testliner, as % of Total Consumption of Raw Materials	16
Consumption of White Top Testliner	17
Consumption of Other Recycled Liner as % of Total Consumption of Raw Materials	18
Consumption of Semi-Chemical Fluting, as % of Total Consumption of Raw Materials	19
Consumption of Recycled Fluting as % of Total Consumption of Raw Materials	20
Total number of Personnel	21
Production per Head ('000 m <sup>2</sup> )	22
Nominal Working Time per Person (Hours per Year)	23
Classification by End Use	(seperate sheet) 24
Fluting Types in % of Total Shipments	(seperate sheet) 25
Printing Colours	(seperate sheet) 26
Diagramms	27-31

## FEFCO ANNUAL REPORT 2016 Key Statistics

	2015	2016	% Change
Total Shipments (Millions of m <sup>2</sup> ) (including Non-Members)	43,227	43,948	1.70
Total Shipments ('000 Tonnes) (including Non-Members)	22,313	22,620	1.40
Shipments of Member Companies (Millions of m <sup>2</sup> )	36,347	37,588	3.40
Shipments of Member Companies ( '000 Tonnes)	17,733	18,264	2.90
Total Number of Companies (including Non-Members)	292	298	2.00
Total Number of Plants (including Non-Members)	472	478	1.30
Average Weight of Board in g/m <sup>2</sup> (including Non-Members)	516	515	-0.20
Die Cut Boxes (as % of Total Shipments in m <sup>2</sup> ) (including Non-Members & Sheetplants)	43.1	42.7	1.40
Shipments in Sheets (as % of Total Shipments in m <sup>2</sup> ) (including Non-Members)	17.3	18.5	8.00
Total Consumption of Raw Materials ( '000 Tonnes) (including Non-Members)	18,738	19,081	1.80
Consumption of Kraftliner as % of Total Consumption of Raw Materials	4.9	5.0	2.00
Consumption of Brown Kraftliner as % of Total Consumption of Raw Materials	14.6	14.8	1.40
Consumption of Testliner as % of Total Consumption of Raw Materials	27.8	27.2	-2.20
Consumption of Other Recycled Liner as % of Total Consumption of Raw Materials	5.7	5.6	-1.80
Consumption of Semi-chemical Fluting as % of Total Consumption of Raw Materials	5.0	4.7	-6.40
Consumption of Recycled Fluting as % of Total Consumption of Raw Materials	36.9	37.5	1.60
Total Personnel	76,734	78,777	2.60

## Total Shipments in Millions of m<sup>2</sup> (including Non-Members)

	2015	2016	% Change 2015/2016	Members Only
<b>Austria</b>	961	979	1.87	Y / Y
<b>Benelux</b>	n.a.	n.a.	n.a.	n.a. / n.a.
<b>Czech Republic</b>	1,039	1,097	5.58	N / N
<b>France</b>	5,430	5,420	-0.18	N / N
<b>Germany</b>	9,873	9,915	0.43	N / N
<b>Hungary</b>	571	602	5.43	N / N
<b>Italy</b>	6,456	6,574	1.83	N / N
<b>Norway</b>	208	213	2.40	Y / Y
<b>Poland</b>	3,795	3,854	1.55	N / N
<b>Romania</b>	665	745	12.03	Y / Y
<b>Spain</b>	4,759	4,952	4.06	N / N
<b>Sweden</b>	644	647	0.47	Y / Y
<b>Switzerland</b>	443	450	1.58	Y / Y
<b>Turkey</b>	3,965	3,886	-1.99	N / N
<b>United Kingdom</b>	4,418	4,614	4.44	N / N
<b>TOTAL EUROPE</b>	<b>43,227</b>	<b>43,948</b>	<b>1.70</b>	

### Total Shipments in 000's Tonnes (including Non-Members)

	2015	2016	% Change 2015/2016
<b>Austria</b>	458	463	1.09
<b>Benelux</b>	n.a.	n.a.	n.a.
<b>Czech Republic</b>	509	538	5.70
<b>France</b>	2,844	2,844	0
<b>Germany</b>	5,129	5,115	-0.27
<b>Hungary</b>	278	293	5.40
<b>Italy</b>	3,620	3,719	2.73
<b>Norway</b>	99	103	4.04
<b>Poland</b>	1,907	1,910	0.16
<b>Romania</b>	322	367	13.98
<b>Spain</b>	2,587	2,661	2.86
<b>Sweden</b>	314	314	0
<b>Switzerland</b>	229	233	1.75
<b>Turkey</b>	2,031	2,022	-0.44
<b>United Kingdom</b>	1,986	2,038	2.62
<b>TOTAL EUROPE</b>	<b>22,313</b>	<b>22,620</b>	<b>1.40</b>

## Shipments of Member Companies in Millions of m<sup>2</sup>

	2015	2016	% Change 2015/2016
<b>Austria</b>	961	979	1.87
<b>Benelux</b>	1,935	1,951	0.83
<b>Czech Republic</b>	677	715	5.61
<b>France</b>	3,914	3,907	-0.18
<b>Germany</b>	7,478	7,591	1.51
<b>Hungary</b>	531	562	5.84
<b>Italy</b>	5,800	6,019	3.78
<b>Norway</b>	208	213	2.40
<b>Poland</b>	3,113	3,386	8.77
<b>Romania</b>	665	745	12.03
<b>Spain</b>	3,478	3,589	3.19
<b>Sweden</b>	644	647	0.47
<b>Switzerland</b>	443	450	1.58
<b>Turkey</b>	2,780	2,937	5.65
<b>United Kingdom</b>	3,720	3,897	4.76
<b>Membership Total</b>	<b>36,347</b>	<b>37,588</b>	<b>3.40</b>

## Shipments of Member Companies in 000's Tonnes

	Membership 2015		Membership 2016	
	Tonnes	% of Total Shipments	Tonnes	% of Total Shipments
<b>Austria</b>	458	100.00	463	100.00
<b>Benelux</b>	1,022	n.a.	1,025	n.a.
<b>Czech Republic</b>	333	65.42	347	64.50
<b>France</b>	2,041	71.77	2,041	71.77
<b>Germany</b>	3,835	74.77	3,879	75.84
<b>Hungary</b>	258	92.81	273	93.17
<b>Italy</b>	3,299	91.13	3,423	92.04
<b>Norway</b>	99	100.00	103	100.00
<b>Poland</b>	1,565	82.07	1,662	87.02
<b>Romania</b>	322	100.00	367	100.00
<b>Spain</b>	1,891	73.10	1,929	72.49
<b>Sweden</b>	314	100.00	314	100.00
<b>Switzerland</b>	229	100.00	233	100.00
<b>Turkey</b>	1,439	70.85	1,533	75.82
<b>United Kingdom</b>	1,650	83.08	1,697	83.27
<b>Membership Total</b>	<b>18,755</b>	<b>79.50</b>	<b>19,289</b>	<b>80.70</b>

## Total Number of Companies (including Non-Members)

	2015	2016
<b>Austria</b>	7	7
<b>Benelux</b>	n.a.	n.a.
<b>Czech Republic</b>	7	7
<b>France</b>	17	17
<b>Germany</b>	44	45
<b>Hungary</b>	8	9
<b>Italy</b>	52	51
<b>Norway</b>	3	3
<b>Poland</b>	37	40
<b>Romania</b>	10	10
<b>Spain</b>	69	71
<b>Sweden</b>	4	4
<b>Switzerland</b>	6	6
<b>Turkey</b>	103	n.a.
<b>United Kingdom</b>	28	28
<b>TOTAL EUROPE</b>	<b>395</b>	<b>298</b>



### Total Number of Plants (including Non-Members)

	2015	2016
<b>Austria</b>	9	9
<b>Benelux</b>	n.a.	n.a.
<b>Czech Republic</b>	10	10
<b>France</b>	62	n.a.
<b>Germany</b>	124	125
<b>Hungary</b>	10	11
<b>Italy</b>	81	81
<b>Norway</b>	3	3
<b>Poland</b>	50	53
<b>Romania</b>	11	11
<b>Spain</b>	87	89
<b>Sweden</b>	11	10
<b>Switzerland</b>	8	8
<b>Turkey</b>	132	n.a.
<b>United Kingdom</b>	68	68
<b>TOTAL EUROPE</b>	<b>666</b>	<b>478</b>

## Total Number of Corrugators (including Non-Members)

	2016			Result
	<2m	>2 <2,5m	> 2,5m	
<b>Austria</b>	2	7	1	10
<b>Benelux</b>	n.a.	n.a.	n.a.	n.a.
<b>Czech Republic</b>	1	8	1	10
<b>France</b>	n.a.	n.a.	n.a.	n.a.
<b>Germany</b>	6	71	27	104
<b>Hungary</b>	2	8	1	11
<b>Italy</b>	6	72	14	92
<b>Norway</b>	n.a.	2	1	3
<b>Poland</b>	n.a.	n.a.	n.a.	n.a.
<b>Romania</b>	1	10	n.a.	11
<b>Spain</b>	10	78	6	94
<b>Sweden</b>	n.a.	10	n.a.	10
<b>Switzerland</b>	2	6	n.a.	8
<b>Turkey</b>	n.a.	n.a.	n.a.	n.a.
<b>United Kingdom</b>	24	44	9	77
<b>TOTAL EUROPE</b>	<b>54</b>	<b>316</b>	<b>60</b>	<b>430</b>

**Average Weight of Board in g/m<sup>2</sup>  
(including Non-Members)**

	<b>2015</b>	<b>2016</b>
<b>Austria</b>	477	473
<b>Benelux</b>	n.a.	n.a.
<b>Czech Republic</b>	490	490
<b>France</b>	524	525
<b>Germany</b>	519	516
<b>Hungary</b>	487	487
<b>Italy</b>	561	566
<b>Norway</b>	476	484
<b>Poland</b>	503	496
<b>Romania</b>	484	493
<b>Spain</b>	544	537
<b>Sweden</b>	488	485
<b>Switzerland</b>	517	518
<b>Turkey</b>	512	520
<b>United Kingdom</b>	450	442
<b>TOTAL EUROPE as weighted average</b>	<b>516</b>	<b>515</b>

**Die Cut Boxes  
(as % of Total Shipments in m<sup>2</sup>)  
(including Non-Members & Sheetplants)**

	<b>2015</b>	<b>2016</b>
<b>Austria</b>	51.9	51.0
<b>Benelux</b>	n.a.	n.a.
<b>Czech Republic</b>	35.7	36.5
<b>France</b>	n.a.	n.a.
<b>Germany</b>	47.9	47.8
<b>Hungary</b>	38.0	39.6
<b>Italy</b>	n.a.	n.a.
<b>Norway</b>	58.2	58.6
<b>Poland</b>	42.6	38.8
<b>Romania</b>	38.0	35.0
<b>Spain</b>	n.a.	n.a.
<b>Sweden</b>	n.a.	n.a.
<b>Switzerland</b>	59.5	60.7
<b>Turkey</b>	n.a.	n.a.
<b>United Kingdom</b>	31.8	34.1
<b>TOTAL EUROPE as weighted average</b>	<b>43.1</b>	<b>42.7</b>

**Shipments in Sheets  
(as % of Total Shipments in m<sup>2</sup>)  
(including Non-Members)**

	2015	2016
<b>Austria</b>	11.3	11.5
<b>Benelux</b>	n.a.	n.a.
<b>Czech Republic</b>	34.9	33.0
<b>France</b>	n.a.	n.a.
<b>Germany</b>	8.7	9.3
<b>Hungary</b>	24.4	24.3
<b>Italy</b>	n.a.	n.a.
<b>Norway</b>	7.3	7.6
<b>Poland</b>	23.9	29.5
<b>Romania</b>	27.0	29.0
<b>Spain</b>	n.a.	n.a.
<b>Sweden</b>	6.3	6.2
<b>Switzerland</b>	6.9	7.1
<b>Turkey</b>	n.a.	n.a.
<b>United Kingdom</b>	29.0	27.8
<b>TOTAL EUROPE as weighted average</b>	<b>17.3</b>	<b>18.5</b>

## Total Consumption of Raw Materials in 000's Tonnes (including Non-Members)

	2015	2016	% Change 2015/2016
<b>Austria</b>	525	535	1.90
<b>Benelux</b>	n.a.	n.a.	n.a.
<b>Czech Republic</b>	560	591	5.54
<b>France</b>	n.a.	n.a.	n.a.
<b>Germany</b>	5,421	5,432	0.20
<b>Hungary</b>	285	294	3.16
<b>Italy</b>	3,729	3,830	2.71
<b>Norway</b>	107	112	4.67
<b>Poland</b>	1,984	1,987	0.15
<b>Romania</b>	355	446	25.63
<b>Spain</b>	2,869	2,951	2.86
<b>Sweden</b>	361	359	-0.55
<b>Switzerland</b>	208	212	1.92
<b>Turkey</b>	n.a.	n.a.	n.a.
<b>United Kingdom</b>	2,334	2,332	-0.09
<b>TOTAL EUROPE</b>	<b>18,738</b>	<b>19,081</b>	<b>1.80</b>

**Consumption of Kraftliner  
(as % of the Total Consumption of Raw Materials)  
(including white and coloured kraft)**

	<b>2015</b>	<b>2016</b>
<b>Austria</b>	6.1	6.5
<b>Benelux</b>	n.a.	n.a.
<b>Czech Republic</b>	3.3	4.2
<b>France</b>	n.a.	n.a.
<b>Germany</b>	5.5	5.3
<b>Hungary</b>	2.6	2.4
<b>Italy</b>	4.6	4.8
<b>Norway</b>	17.1	17.5
<b>Poland</b>	1.9	1.5
<b>Romania</b>	0.8	0.7
<b>Spain</b>	4.6	5.3
<b>Sweden</b>	14.8	15.6
<b>Switzerland</b>	7.1	7.2
<b>Turkey</b>	1.2	1.2
<b>United Kingdom</b>	5.4	5.5
<b>TOTAL EUROPE as weighted average</b>	<b>4.9</b>	<b>5.0</b>

## Consumption of Brown Kraftliner (as % of the Total Consumption of Raw Materials)

	2015	2016
<b>Austria</b>	13.5	13.6
<b>Benelux</b>	n.a.	n.a.
<b>Czech Republic</b>	10.7	8.6
<b>France</b>	n.a.	n.a.
<b>Germany</b>	14.7	14.6
<b>Hungary</b>	12.0	12.1
<b>Italy</b>	18.7	19.8
<b>Norway</b>	14.4	14.1
<b>Poland</b>	9.5	8.2
<b>Romania</b>	10.9	10.3
<b>Spain</b>	15.4	15.8
<b>Sweden</b>	14.8	15.6
<b>Switzerland</b>	15.9	17.8
<b>Turkey</b>	19.7	18.6
<b>United Kingdom</b>	12.9	14.2
<b>TOTAL EUROPE as weighted average</b>	<b>14.6</b>	<b>14.8</b>



### Consumption of Testliner (as % of the Total Consumption of Raw Materials)

	2015	2016
<b>Austria</b>	30.3	29.2
<b>Benelux</b>	n.a.	n.a.
<b>Czech Republic</b>	35.6	36.0
<b>France</b>	n.a.	n.a.
<b>Germany</b>	30.2	30.8
<b>Hungary</b>	37.2	37.0
<b>Italy</b>	14.4	14.4
<b>Norway</b>	28.1	27.4
<b>Poland</b>	35.5	35.5
<b>Romania</b>	35.3	35.2
<b>Spain</b>	21.0	20.4
<b>Sweden</b>	16.6	16.1
<b>Switzerland</b>	36.8	34.9
<b>Turkey</b>	19.8	18.8
<b>United Kingdom</b>	41.5	37.3
<b>TOTAL EUROPE as weighted average</b>	<b>27.8</b>	<b>27.2</b>

### Consumption of White Top Testliner (as % of the Total Consumption of Raw Materials)

	2015	2016
<b>Austria</b>	6.4	6.7
<b>Benelux</b>	n.a.	n.a.
<b>Czech Republic</b>	8.4	9.4
<b>France</b>	n.a.	n.a.
<b>Germany</b>	8.6	8.5
<b>Hungary</b>	n.a.	n.a.
<b>Italy</b>	4.8	4.7
<b>Norway</b>	3.0	2.9
<b>Poland</b>	11.5	11.7
<b>Romania</b>	5.2	5.6
<b>Spain</b>	5.3	5.3
<b>Sweden</b>	n.a.	n.a.
<b>Switzerland</b>	n.a.	n.a.
<b>Turkey</b>	3.3	5.5
<b>United Kingdom</b>	n.a.	n.a.
<b>TOTAL EUROPE as weighted average</b>	<b>7.3</b>	<b>7.2</b>

**Consumption of schrenz and other liners  
(as % of the Total Consumption of Raw Materials)**

	2015	2016
<b>Austria</b>	3.6	3.6
<b>Benelux</b>	n.a.	n.a.
<b>Czech Republic</b>	n.a.	0.7
<b>France</b>	n.a.	n.a.
<b>Germany</b>	1.6	1.6
<b>Hungary</b>	10.5	10.4
<b>Italy</b>	10.5	9.9
<b>Norway</b>	0.7	0.7
<b>Poland</b>	2.0	2.3
<b>Romania</b>	10.2	10.5
<b>Spain</b>	8.1	7.8
<b>Sweden</b>	16.6	16.1
<b>Switzerland</b>	3.7	3.6
<b>Turkey</b>	5.2	6.1
<b>United Kingdom</b>	n.a.	n.a.
<b>TOTAL EUROPE as weighted average</b>	<b>5.7</b>	<b>5.6</b>

## Consumption of Semi-Chemical Fluting (as % of the Total Consumption of Raw Materials)

	2015	2016
<b>Austria</b>	8.1	8.6
<b>Benelux</b>	n.a.	n.a.
<b>Czech Republic</b>	1.2	0.8
<b>France</b>	n.a.	n.a.
<b>Germany</b>	1.4	1.3
<b>Hungary</b>	1.8	2.3
<b>Italy</b>	11.5	10.7
<b>Norway</b>	13.8	13.7
<b>Poland</b>	1.5	1.3
<b>Romania</b>	3.6	1.0
<b>Spain</b>	8.3	7.6
<b>Sweden</b>	9.7	8.6
<b>Switzerland</b>	5.3	5.4
<b>Turkey</b>	10.3	17.7
<b>United Kingdom</b>	1.9	1.9
<b>TOTAL EUROPE as weighted average</b>	<b>5.0</b>	<b>4.7</b>

**Consumption of wellenstoff and other fluting  
(as % of the Total Consumption of Raw Materials)**

	<b>2015</b>	<b>2016</b>
<b>Austria</b>	32.0	31.8
<b>Benelux</b>	n.a.	n.a.
<b>Czech Republic</b>	40.8	40.3
<b>France</b>	n.a.	n.a.
<b>Germany</b>	38.0	37.9
<b>Hungary</b>	35.9	35.8
<b>Italy</b>	35.5	35.7
<b>Norway</b>	22.9	23.7
<b>Poland</b>	38.1	39.5
<b>Romania</b>	34.0	36.7
<b>Spain</b>	37.3	37.8
<b>Sweden</b>	27.5	28.0
<b>Switzerland</b>	31.2	31.1
<b>Turkey</b>	40.5	32.1
<b>United Kingdom</b>	38.3	41.1
<b>TOTAL EUROPE as weighted average</b>	<b>36.9</b>	<b>37.5</b>

## Total Number of Personnel

	2015		2016	
	Production Employees	Total Employees	Production Employees	Total Employees
<b>Austria</b>	1,347	1,844	1,428	1,985
<b>Benelux</b>	n.a.	n.a.	n.a.	n.a.
<b>Czech Republic</b>	1,187	1,501	1,217	1,502
<b>France</b>	n.a.	n.a.	n.a.	n.a.
<b>Germany</b>	13,722	19,058	13,882	19,200
<b>Hungary</b>	1,010	1,518	1,084	1,601
<b>Italy</b>	5,840	13,280	5,910	13,310
<b>Norway</b>	327	510	328	510
<b>Poland</b>	4,368	6,344	4,975	7,197
<b>Romania</b>	1,390	1,820	1,360	1,850
<b>Spain</b>	7,887	10,353	8,114	10,746
<b>Sweden</b>	1,156	1,636	1,144	1,625
<b>Switzerland</b>	853	1,283	844	1,279
<b>Turkey</b>	6,086	7,790	5,751	7,472
<b>United Kingdom</b>	6,466	9,797	6,500	10,500
<b>TOTAL EUROPE</b>	<b>51,639</b>	<b>76,734</b>	<b>52,537</b>	<b>78,777</b>

### Production per Head in 1000 m<sup>2</sup>

	2015	2016
<b>Austria</b>	713	686
<b>Benelux</b>	n.a.	n.a.
<b>Czech Republic</b>	875	901
<b>France</b>	n.a.	n.a.
<b>Germany</b>	720	714
<b>Hungary</b>	565	555
<b>Italy</b>	1,105	1,112
<b>Norway</b>	636	649
<b>Poland</b>	869	775
<b>Romania</b>	478	548
<b>Spain</b>	603	610
<b>Sweden</b>	557	566
<b>Switzerland</b>	519	533
<b>Turkey</b>	651	676
<b>United Kingdom</b>	683	710
<b>TOTAL EUROPE</b>	<b>837</b>	<b>837</b>

## Nominal Working Time and Productivity per Head

	Working Time [hours / year]		Productivity [m <sup>2</sup> /man hour]	
	2015	2016	2015	2016
<b>Austria</b>	1,695	1,687	421	406
<b>Benelux</b>	n.a.	n.a.	n.a.	n.a.
<b>Czech Republic</b>	1,826	1,792	479	503
<b>France</b>	n.a.	n.a.	n.a.	n.a.
<b>Germany</b>	1,850	1,850	389	386
<b>Hungary</b>	1,848	1,848	306	301
<b>Italy</b>	1,896	1,896	583	587
<b>Norway</b>	1,725	1,725	369	376
<b>Poland</b>	2,016	2,016	431	384
<b>Romania</b>	1,880	1,880	254	291
<b>Spain</b>	1,768	1,768	341	345
<b>Sweden</b>	1,486	1,486	375	381
<b>Switzerland</b>	2,149	2,106	242	253
<b>Turkey</b>	2,040	2,048	319	330
<b>United Kingdom</b>	1,710	1,710	400	415
<b>TOTAL EUROPE</b>	<b>1,838</b>	<b>1,832</b>	<b>378</b>	<b>381</b>



## Classification of shipment by end-use sector, as a percentage of turnover 2016

	Austria	Benelux	Czech Republic	France	Germany	Hungary	Italy	Norway	Poland	Romania	Spain	Sweden	Switzerland	Turkey	United Kingdom		Weighted Average
1	22.6	n.a.	26.0	n.a.	29.2	18.0	9.3	30.9	32.1	25.0	16.5	31.4	42.8	29.8	n.a.	n.a.	26.4
2	6.8	n.a.	2.0	n.a.	3.2	7.0	38.8	25.6	6.7	6.0	23.2	1.9	4.0	6.0	n.a.	n.a.	8.5
3	9.3	n.a.	5.5	n.a.	4.9	1.6	10.2	6.2	4.8	7.0	15.0	4.8	5.8	4.8	n.a.	n.a.	7.1
4	0.1	n.a.	1.5	n.a.	0.7	1.1	1.0	0.3	1.1	1.0	1.6	0.0	0.8	1.1	n.a.	n.a.	1.0
<b>Subtotal</b>	<b>38.8</b>	<b>n.a.</b>	<b>35.0</b>	<b>n.a.</b>	<b>38.0</b>	<b>27.7</b>	<b>59.3</b>	<b>63.0</b>	<b>44.7</b>	<b>39.0</b>	<b>56.3</b>	<b>38.1</b>	<b>53.4</b>	<b>41.7</b>	<b>n.a.</b>	<b>n.a.</b>	<b>42.9</b>
5	1.0	n.a.	0.8	n.a.	1.8	0.9	1.5	0.5	1.1	1.8	1.0	0.3	1.0	3.5	n.a.	n.a.	1.4
6	1.4	n.a.	2.3	n.a.	1.5	0.0	2.0	3.3	5.0	19.0	1.0	5.5	0.9	2.9	n.a.	n.a.	2.7
7	3.1	n.a.	4.8	n.a.	3.7	2.5	14.7	6.1	3.6	2.5	2.5	13.9	3.7	2.7	n.a.	n.a.	3.9
8	3.6	n.a.	1.6	n.a.	5.8	2.5	4.2	3.7	2.3	2.0	2.0	5.9	6.5	2.3	n.a.	n.a.	4.1
9	4.2	n.a.	6.6	n.a.	4.6	15.5	6.2	0.6	6.7	2.0	3.0	0.0	3.0	5.3	n.a.	n.a.	4.6
10	4.3	n.a.	3.2	n.a.	3.8	0.2	0.6	0.0	0.5	0.5	1.0	0.0	1.1	2.2	n.a.	n.a.	2.2
11	2.2	n.a.	6.9	n.a.	1.2	1.7	5.9	0.2	1.6	2.0	3.0	1.1	0.5	4.8	n.a.	n.a.	1.9
12	10.8	n.a.	1.4	n.a.	3.2	1.7	0.8	1.0	0.5	0.1	0.5	3.2	1.5	0.5	n.a.	n.a.	2.0
13	2.3	n.a.	1.1	n.a.	2.2	2.8	0.2	0.5	0.5	5.0	1.4	0.0	1.1	1.1	n.a.	n.a.	1.7
14	2.6	n.a.	2.8	n.a.	2.8	4.1	0.4	1.6	1.4	1.0	1.9	1.6	2.1	1.1	n.a.	n.a.	2.3
15	0.1	n.a.	5.2	n.a.	0.5	3.8	0.7	0.3	4.6	0.2	3.5	0.0	0.1	0.6	n.a.	n.a.	2.0
16	0.3	n.a.	2.2	n.a.	1.1	7.5	0.4	0.1	0.8	2.8	1.5	0.0	0.8	4.0	n.a.	n.a.	1.4
17	0.9	n.a.	3.7	n.a.	2.8	1.7	0.8	5.7	0.2	0.0	1.5	0.0	0.4	3.3	n.a.	n.a.	2.0
18	0.2	n.a.	0.0	n.a.	0.7	0.3	0.3	0.0	0.1	0.1	0.9	0.0	0.4	0.1	n.a.	n.a.	0.6
19	1.8	n.a.	4.8	n.a.	0.0	2.2	0.3	1.0	3.1	1.0	1.0	0.0	7.0	3.1	n.a.	n.a.	1.0
20	0.2	n.a.	2.6	n.a.	0.8	4.5	0.6	0.0	0.0	2.0	2.0	0.0	0.6	0.1	n.a.	n.a.	1.1
21	2.4	n.a.	4.1	n.a.	3.6	3.1	0.6	0.0	1.3	1.0	2.5	0.0	0.8	0.0	n.a.	n.a.	2.7
22	11.8	n.a.	6.7	n.a.	15.9	12.1	0.0	1.3	13.1	15.0	11.4	20.7	9.5	15.5	n.a.	n.a.	14.0
23	8.0	n.a.	4.2	n.a.	6.0	5.2	0.5	11.1	8.9	3.0	2.1	9.7	5.6	5.2	n.a.	n.a.	5.6
<b>Subtotal</b>	<b>61.2</b>	<b>n.a.</b>	<b>65.0</b>	<b>n.a.</b>	<b>62.0</b>	<b>72.3</b>	<b>40.7</b>	<b>37.0</b>	<b>55.3</b>	<b>61.0</b>	<b>43.7</b>	<b>61.9</b>	<b>46.6</b>	<b>58.3</b>	<b>n.a.</b>	<b>n.a.</b>	<b>57.1</b>
<b>Total</b>	<b>100.0</b>	<b>n.a.</b>	<b>100.0</b>	<b>n.a.</b>	<b>100.0</b>	<b>100.0</b>	<b>100.0</b>	<b>100.0</b>	<b>100.0</b>	<b>100.0</b>	<b>100.0</b>	<b>100.0</b>	<b>100.0</b>	<b>100.0</b>	<b>n.a.</b>	<b>n.a.</b>	

### Categories for classification:

- |  |   |
|--|---|
| 1 Foodstuffs                                     | 13 Machines and parts   |
| 2 Agricultural Produce and Fresh Food            | 14 Electrical equipment and accessories (except domestic appliance) |
| 3 Beverages                                      | 15 Audio, video and communication equipments                        |
| 4 Tobacco Products                               | 16 Electric appliances  |
| 5 Textiles, clothing, leather goods              | 17 Means of transport   |
| 6 Wooden goods and furniture                     | 18 Precision instruments, optical equipment and watches             |
| 7 Paper goods and printed matter                 | 19 Other industrial product   |
| 8 Chemicals and related products                 | 20 Sportswear and accessories, toys                                 |
| 9 Detergents, soaps, perfumes, cosmetics, etc.   | 21 Direct mail companies, dispatching houses                        |
| 10 Rubber goods                                  | 22 Corrugated Board converters (sheet plans)                        |
| 11 Glassware, ceramicware and other non minerals | 23 All other not classified above                                   |
| 12 Metalware                                     |   |

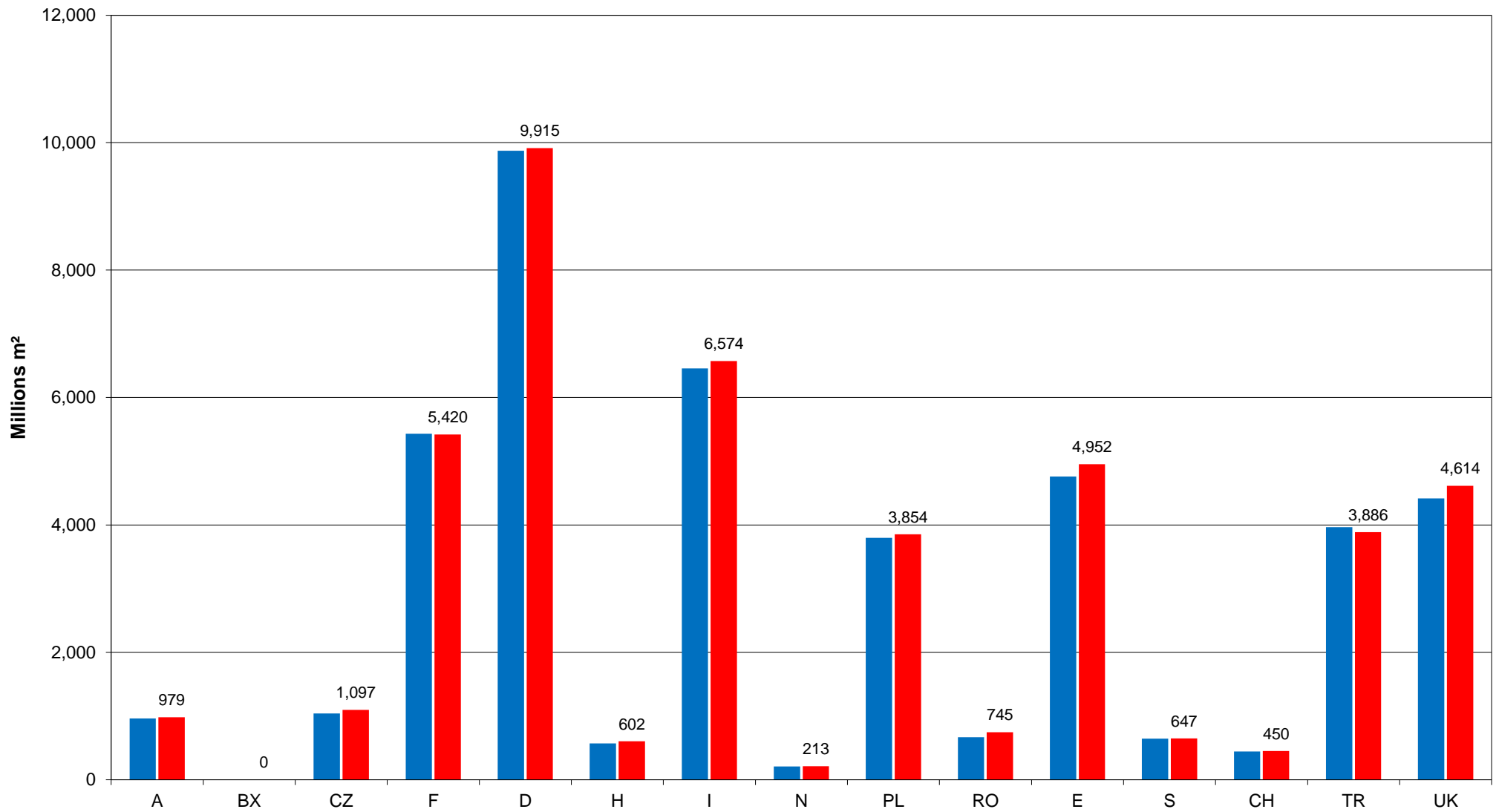
## Fluting Types in % of Total Shipments 2016

	<b>B-flute</b>	<b>C-flute</b>	<b>BC-flute</b>	<b>E-flute</b>	<b>Micro-FI</b>	<b>Others</b>
<b>Austria</b>	38.2	17.2	11.5	18.4	1.2	13.5
<b>Benelux</b>	n.a.	n.a.	n.a.	n.a.	n.a.	n.a.
<b>Czech Republic</b>	51.9	6.9	13.0	19.7	0.0	8.5
<b>France</b>	n.a.	n.a.	n.a.	n.a.	n.a.	n.a.
<b>Germany</b>	38.0	13.0	16.4	14.1	1.9	16.6
<b>Hungary</b>	41.5	19.5	15.6	14.4	0.6	8.4
<b>Italy</b>	n.a.	n.a.	n.a.	n.a.	n.a.	n.a.
<b>Norway</b>	46.0	29.9	5.8	15.3	0.9	2.1
<b>Poland</b>	45.1	15.7	10.0	16.1	0.2	12.9
<b>Romania</b>	39.5	25.5	20.0	12.0	0.0	3.0
<b>Spain</b>	n.a.	n.a.	n.a.	n.a.	n.a.	n.a.
<b>Sweden</b>	n.a.	n.a.	n.a.	n.a.	n.a.	n.a.
<b>Switzerland</b>	n.a.	n.a.	n.a.	n.a.	n.a.	n.a.
<b>Turkey</b>	15.9	20.8	55.4	5.4	0.0	2.5
<b>United Kingdom</b>	n.a.	n.a.	n.a.	n.a.	n.a.	n.a.
<b>Total Europe as weighted average</b>	36.2	15.6	22.0	13.3	1.0	11.9

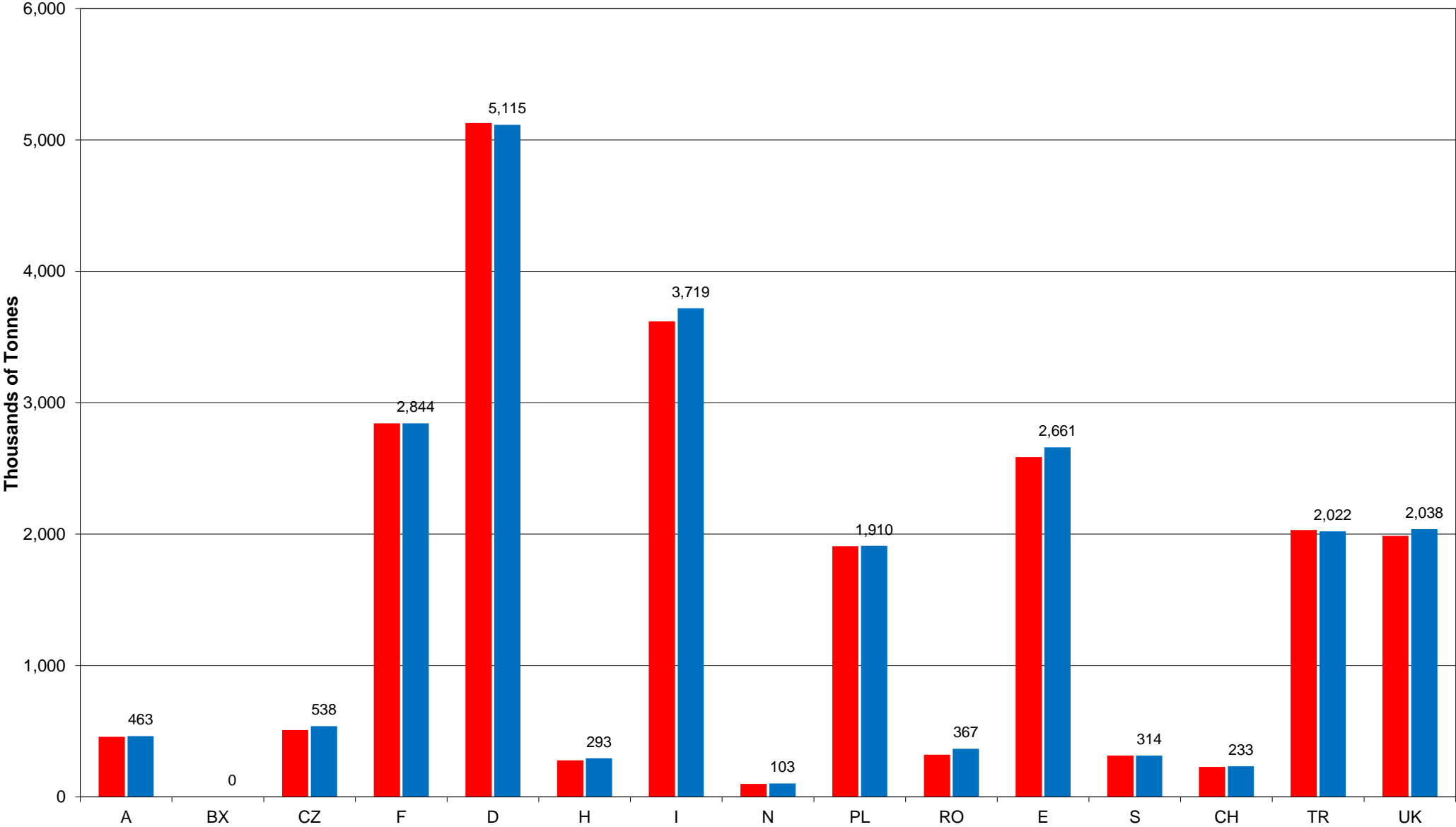
Countries	% of the Products by Number of Printing Colours										% Changes				
	2015					2016					2015 / 2016				
	0	1	2	3	> 3	0	1	2	3	> 3	0	1	2	3	> 3
Austria	38.7	34.8	10.0	6.5	10.0	38.0	35.1	10.1	7.5	9.3	-1.8	0.9	1.0	15.4	-7.0
Benelux	n.a.	n.a.	n.a.	n.a.	n.a.	n.a.	n.a.	n.a.	n.a.	n.a.	n.a.	n.a.	n.a.	n.a.	n.a.
Czech Republic	28.5	40.5	16.6	8.1	6.3	29.4	41.5	16.2	5.8	7.1	3.2	2.5	-2.4	-28.4	12.7
France	n.a.	n.a.	n.a.	n.a.	n.a.	n.a.	n.a.	n.a.	n.a.	n.a.	n.a.	n.a.	n.a.	n.a.	n.a.
Germany	29.1	33.7	14.9	10.5	11.8	28.7	33.8	14.9	10.8	11.8	-1.4	0.3	0.0	2.9	0.0
Hungary	47.2	25.5	11.6	8.1	7.6	47.7	27.7	10.1	5.7	8.8	1.1	8.6	-12.9	-29.6	15.8
Italy	n.a.	n.a.	n.a.	n.a.	n.a.	n.a.	n.a.	n.a.	n.a.	n.a.	n.a.	n.a.	n.a.	n.a.	n.a.
Norway	18.7	29.3	19.9	19.6	12.5	23.4	26.0	19.3	19.4	11.9	25.1	-11.3	-3.0	-1.0	-4.8
Poland	46.0	21.9	10.3	10.8	11.0	48.9	20.0	9.3	10.4	11.4	6.3	-8.7	-9.7	-3.7	3.6
Romania	28.0	34.0	22.0	12.0	4.0	33.0	33.0	20.0	12.0	2.0	17.9	-2.9	-9.1	0.0	-50.0
Spain	n.a.	n.a.	n.a.	n.a.	n.a.	n.a.	n.a.	n.a.	n.a.	n.a.	n.a.	n.a.	n.a.	n.a.	n.a.
Sweden	n.a.	n.a.	n.a.	n.a.	n.a.	n.a.	n.a.	n.a.	n.a.	n.a.	n.a.	n.a.	n.a.	n.a.	n.a.
Switzerland	n.a.	n.a.	n.a.	n.a.	n.a.	n.a.	n.a.	n.a.	n.a.	n.a.	n.a.	n.a.	n.a.	n.a.	n.a.
Turkey	n.a.	n.a.	n.a.	n.a.	n.a.	n.a.	n.a.	n.a.	n.a.	n.a.	n.a.	n.a.	n.a.	n.a.	n.a.
United Kingdom	n.a.	n.a.	n.a.	n.a.	n.a.	n.a.	n.a.	n.a.	n.a.	n.a.	n.a.	n.a.	n.a.	n.a.	n.a.

# Shipments in Millions m<sup>2</sup>

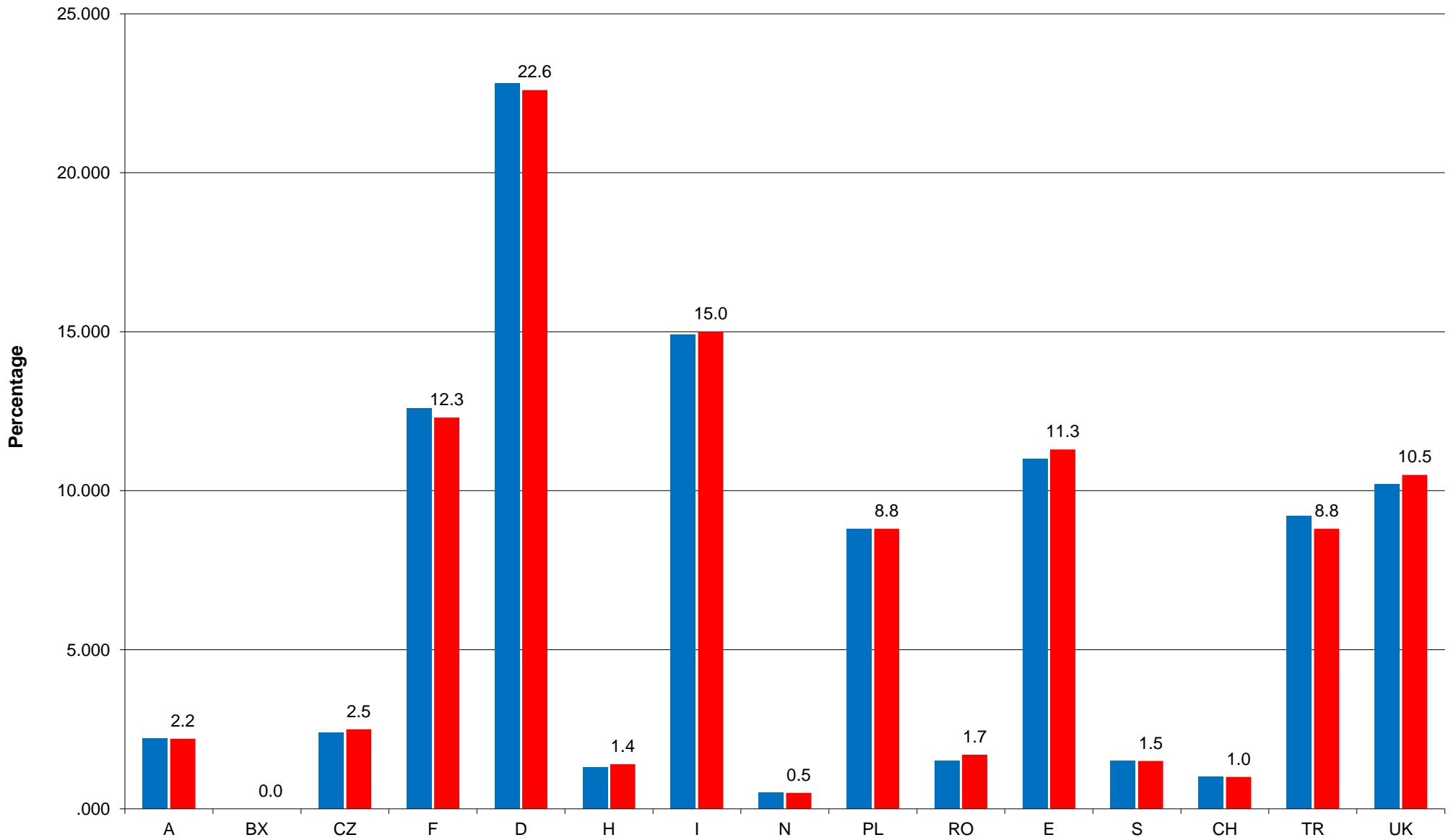
■ 2015 ■ 2016



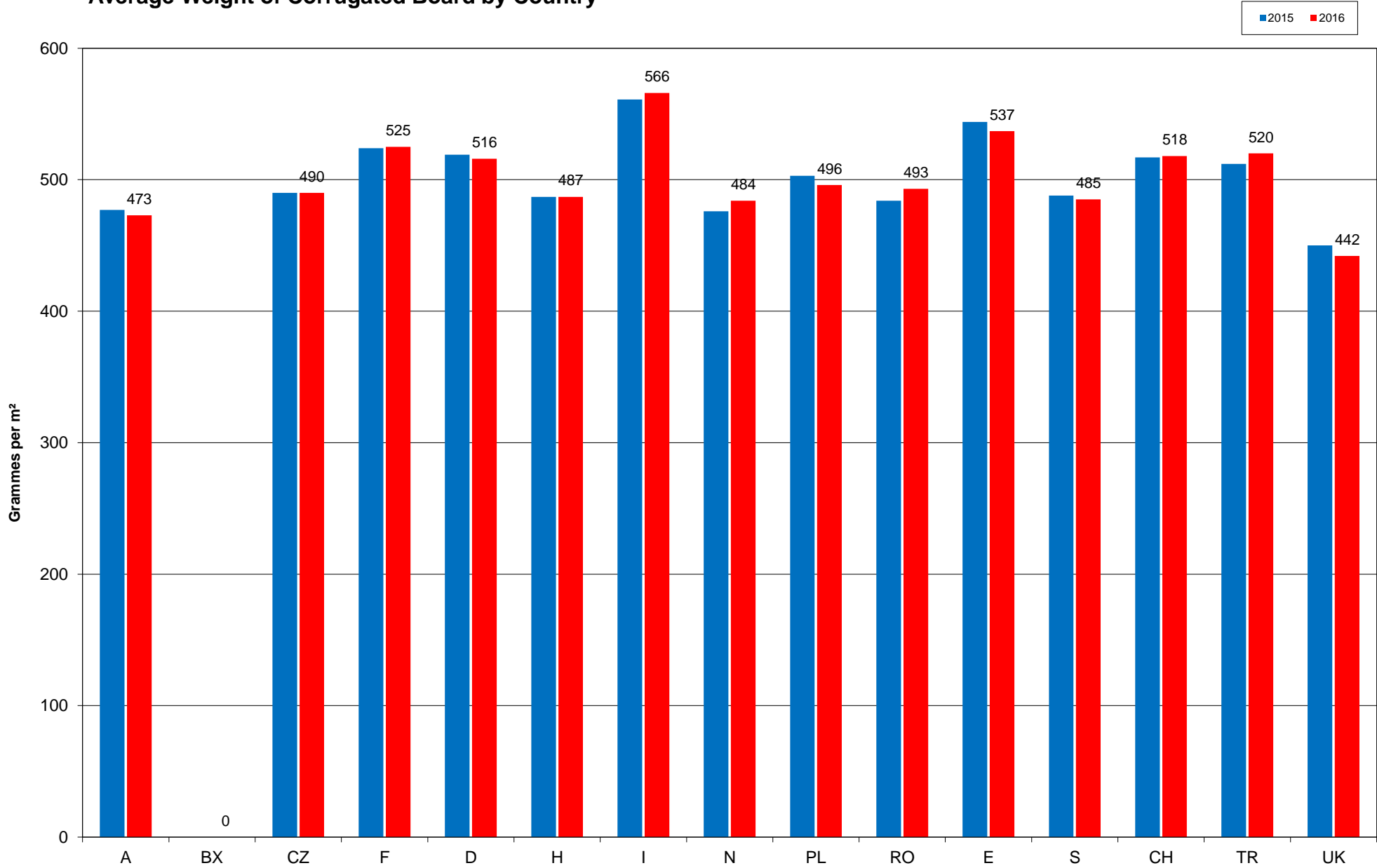
# Shipments in '000 Tonnes



# Relative Share of Total Shipments by Country (based on m<sup>2</sup>)



# Average Weight of Corrugated Board by Country



# Fluting Type

